

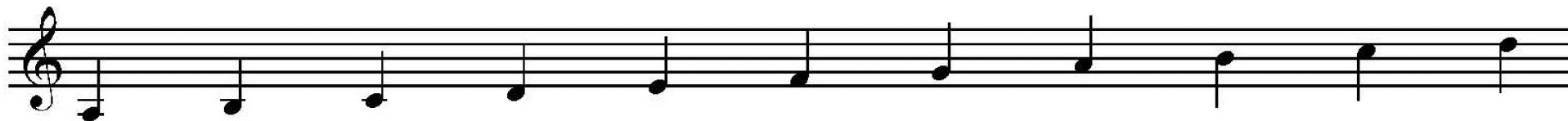


A Complete Fingering Chart for Triple Ocarina (Part One)

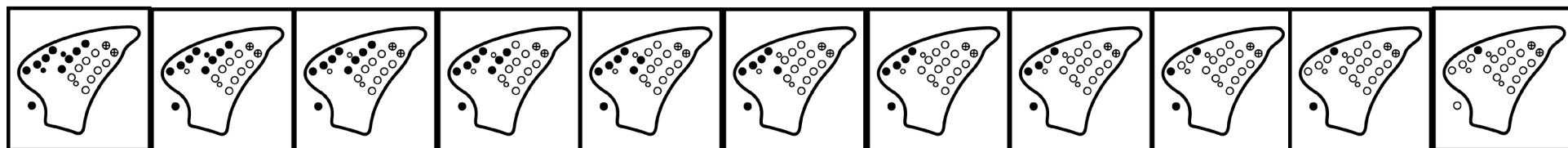
This fingering chart is for the main ocarina.

The actual pitch is one octave above the notes written here.

A B C D E F G A B C D



©2008 by STL Ocarina

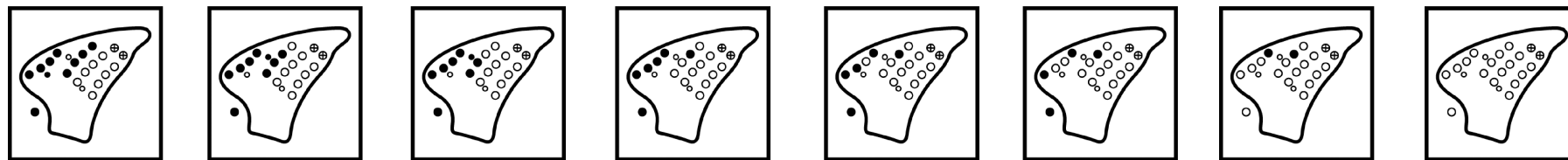


3 4[#] = 5^b 5 6 7 1 2 3 4[#] = 5^b 5 6

A[#]=B^b C[#]=D^b D[#]=E^b F[#]=G^b G[#]=A^b A[#]=B^b C[#]=D^b D[#]=E^b



©2008 by STL Ocarina



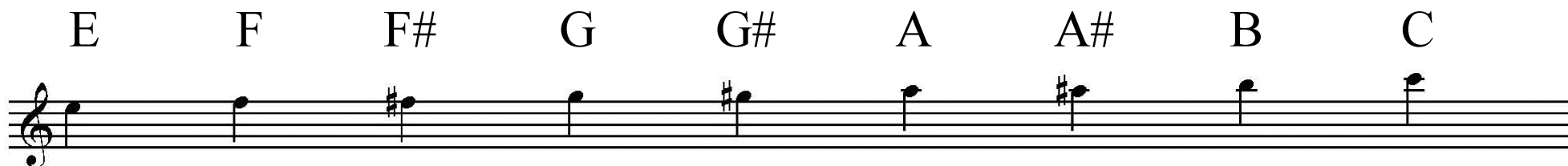
4 5[#] = 6^b 6[#] = 7^b 1[#] = 2^b 2[#] = 3^b 4 5[#] = 6^b 6[#] = 7^b



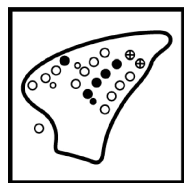
A Complete Fingering Chart for Triple Ocarina (Part Two)

This fingering chart is for the second ocarina.

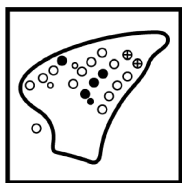
The actual pitch is one octave above the notes written here.



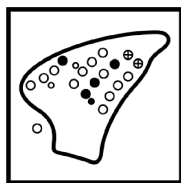
©2008 by STL Ocarina



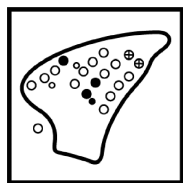
7



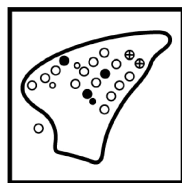
i



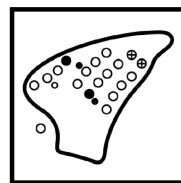
i #



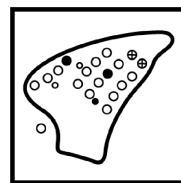
2



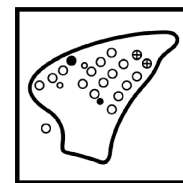
2 #



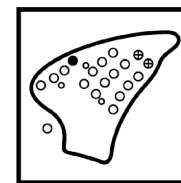
3



4



4 # = 5 ^b



5

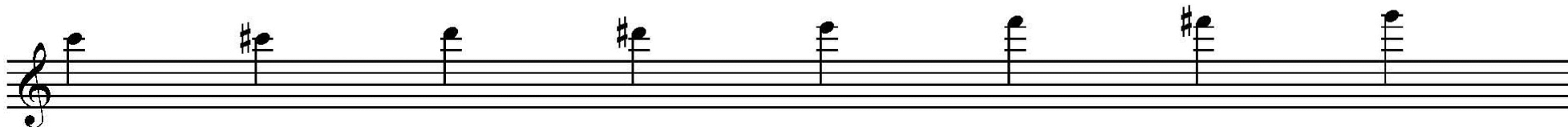


A Complete Fingering Chart for Triple Ocarina (Part Three)

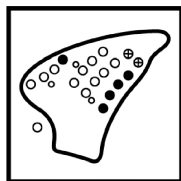
This fingering chart is for the third ocarina.

The actual pitch is one octave above the notes written here.

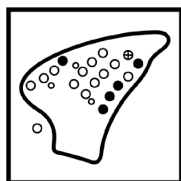
C C# D D# E F F# G



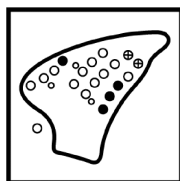
©2008 by STL Ocarina



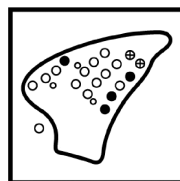
5̇



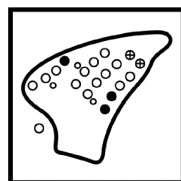
5̇#



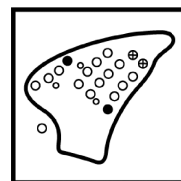
6̇



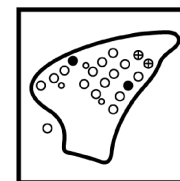
6̇#



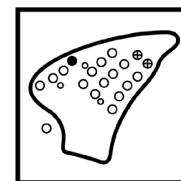
7̇



1̇



1̇#



2̇